



# British Wool – Sale Report

## BW86 – 7<sup>th</sup> January 2020



### Key Points

The British Wool index increased by 0.7% sale on sale to £1.304 / kg clean.

Total weight offered 1.599m kg      Total weight sold 1.525m kg      Clearance 95.3%

Average clean price £1.287 / kg      Average greasy price £0.863 / kg

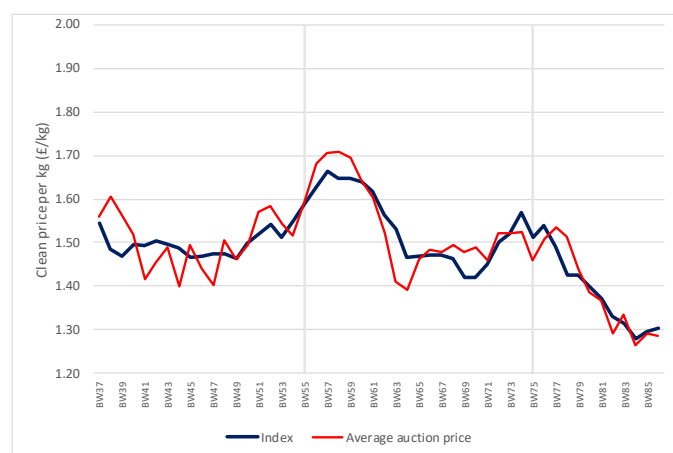
### Commentary

BW86 saw firm pricing and good demand particularly for carpet types.

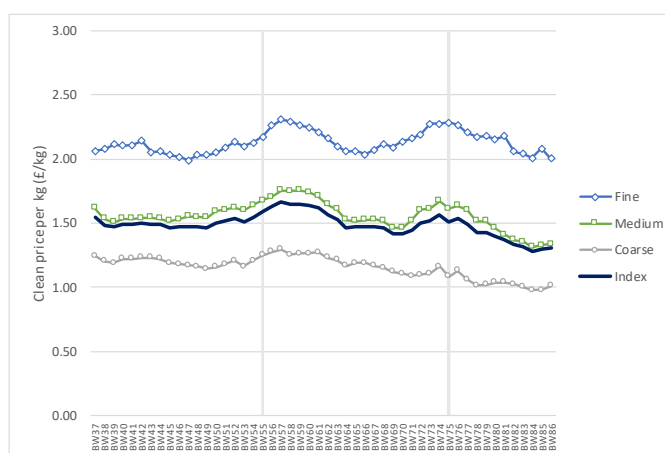
Overall 1.525 million kg of the 1.599 million kg offered sold, a clearance of 95.3%.

The clearances by wool type were as follows; Fine wool 86%, Medium wool 98%, Crossbred wool 100%, Hill wool 93%, and Mountain wool 99%.

British Wool Index (GBP Clean)



Main wool types vs. British Wool Index



### Price movements for key wool types

**Fine:** Hogs No1 – sellers favour. Hogs No2 – upto 10% cheaper on an inferior offering compared to BW85. Ewes No1 & No2 – firm to 1% dearer. Lt Grey – fully 1% dearer.

**Romney:** Ewes No1 - firm. Ewes No2 – buyers favour to 1.5% cheaper.

**Medium:** Hogs No2 – upto 10% cheaper on an inferior offering compared to BW85. Ewes No1 – fully 1% dearer. Ewes No2 – 3.5% dearer. Lt Grey – 2.5% dearer.

**Mules:** Hogs No1 – upto 5% dearer. Hogs No2 – firm. Ewes No1 – upto 2% dearer. Ewes No2 – firm. Cott grades – up to 5% dearer. Lt Grey – upto 4% dearer.

**Cheviots:** Firm to sellers favour.

**Radnors:** Medium No2 – upto 4.5% dearer. Lt Grey – upto 4% dearer.

**Welsh:** All types 6% dearer.

**Blackface:** Fine No1 – 3% dearer. No2 – sellers favour. Cott – 1.5% dearer. Lt Grey – 4% dearer.

**Swaledale:** No1 – upto 20% dearer. No2 – upto 10% dearer. Grey – fully 12.5% dearer.