



British Wool – Sale Report

BW204 – 12th August 2025



KEY METRICS

Index:	1.4172	Total weight offered:	1,170 tonnes
Average clean price:	£1.373 per kg	Total weight sold:	1,062 tonnes
Average greasy price:	£0.952 per kg	Clearance:	90.7%

SALE REPORT

BW204 on 12th August comprised a mix of 597 tonnes of new season wool and 573 tonnes of 2024 season. Bidding was initially tentative causing British Wool to take the decision to send some lots to unsold, but after the first couple of depots the market found a level and bidding intensity improved meaning by the end of the first half the clearance was ~70%, bidding became more animated as the auction progressed and the auction finished on a respectable clearance of 90.7% with prices overall dearer where comparable to BW203. Bidding for combing wools was slightly muted but competition on the carpet style grades was considerably more competitive.

Several 24 season speciality types attracted good competition and prices. Out of the 573 tonnes of 24 season wool offered only 18 tonnes was taken back into stock meaning we have now sold almost 99% of the total 24 season supply.

The colour results on 25 season wool are continuing to be significantly better than 24 season, which in itself is having an impact on the price due to there being more availability of No1 grades but overall should help returns to members in the long run.

The volumes sold, clearances by wool type, and price changes in BW204 were as follows:

Wool type	Weight sold (Tonnes)	Clearance	Price change
Fine	139	79%	Hoggs 2 – fully firm, Ewes 1 – 2% cheaper, Ewes 2 – fully firm to sellers' favour.
Medium	205	83%	Hoggs 1 – 2.5% cheaper, Hoggs 2 – buyers' favour, Ewes 1 – 2% to 4% dearer, Ewes 2 – fully firm, Lt Grey – 1.5% dearer.
Romney	32	100%	Ewes 1 – firm to sellers' favour.
Mule	288	95%	Hoggs 1 – up to 3% dearer, Hoggs 2 – buyers' favour, Ewes 1 & 2 – 2% to 3% dearer, Cott grades – 1.5% to 4% dearer, Lt Grey – buyers' favour.
Lustre	12	75%	Fully 5% dearer.
Cheviot	42	100%	Hoggs 2 – up to 1% dearer, Ewes 2 – 2% dearer.
Cheviot Cross	40	100%	Up to 3.5% dearer.
Hill	17	100%	Firm.
Blackface	60	100%	No 2 & Cotts – fully 7.5% dearer.
Welsh Mountain	59	100%	No 1 – sellers' favour, No 2 – firm, Coloured Kempy – buyers' favour.
Swaledale	6	100%	No 1 & Lt Grey – up to 6% dearer.
Lamb	18	100%	Sellers' Favour.
Fault, Oddments, Winter Shorn, Organic	46	100%	Oddments – Sellers' Favour.

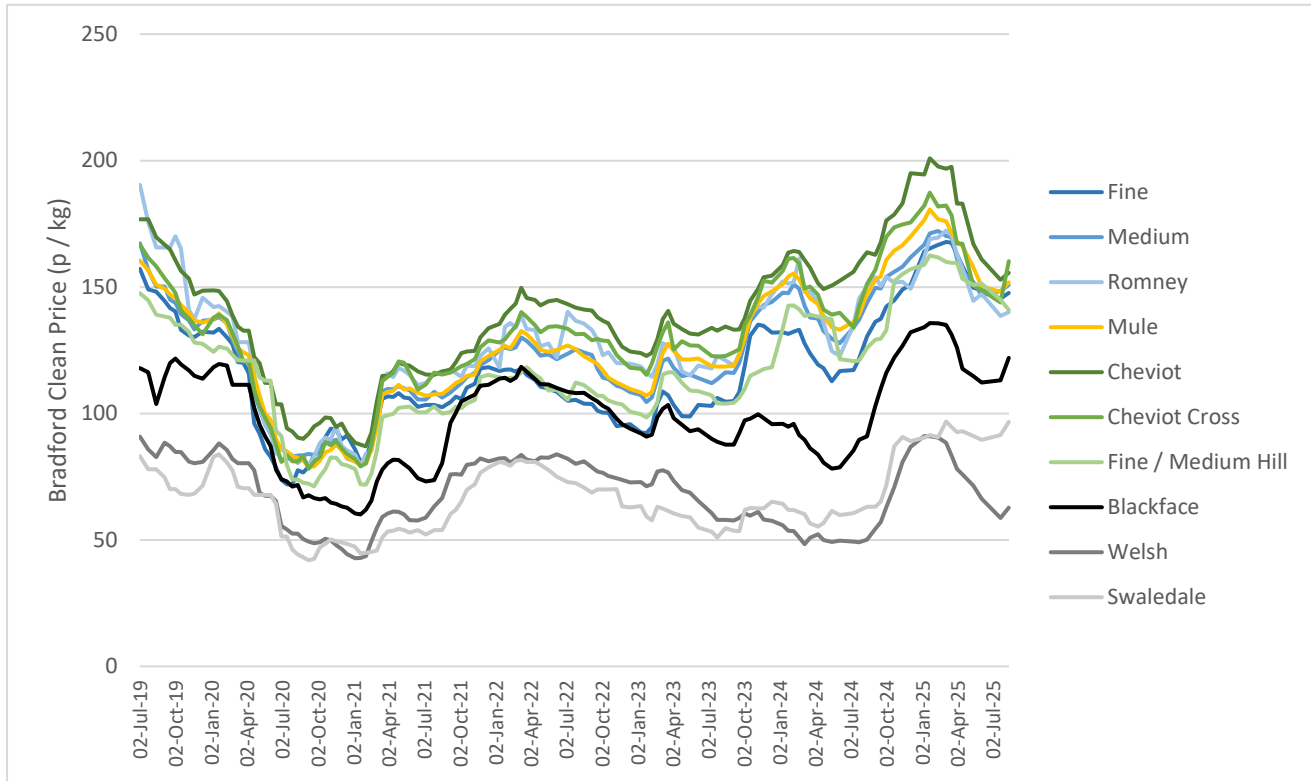


British Wool – Sale Report

BW204 – 12th August 2025



PRICE MOVEMENTS FOR KEY WOOL TYPES: JULY 2019 TO DATE



PRICE INDEX HISTORY: JULY 2015 TO DATE

