



# British Wool – Sale Report

## BW205 – 2<sup>nd</sup> September 2025



### KEY METRICS

Index:	1.418	Total weight offered:	1,173 tonnes
Average clean price:	£1.454 per kg	Total weight sold:	1,053 tonnes
Average greasy price:	£0.969 per kg	Clearance:	89.7%

### SALE REPORT

The UK wool market was firm in BW205 on 2<sup>nd</sup> September. After a tentative start bidding became more confident through the sale. After the conclusion of the sale 90% of the almost 1.2m kg of wool in the offer had been sold.

The index was flat sale on sale as was the average greasy sale price. Average sale prices for Romney, Cheviot and Blackface types were higher supported by the transition from poor colour old season lots to better colour new season wool.

The vast majority of the wool in the offer was from the new season. Of the 1,053 tonnes sold, 847 tonnes was 2025 season wool and just 205 tonnes was 2024 season wool. The old season wool included a number of speciality lots which saw strong competition. Selected lots of good colour organic wool were also well sought after and attracted a premium.

Test results for new season wool are significantly better than last year for colour and British Wool continues to produce a greater proportion of No.1 grades in the core types. British Wool's intake volumes over the summer months were comparable to the 2024 season and current expectations are for the total supply of wool this season to be very similar to last year.

The next British Wool sale is in two weeks' time and all but a very small number of lots will be new season wool.

The volumes sold, clearances by wool type, and price changes in BW205 were as follows:

Wool type	Weight sold (Tonnes)	Clearance	Price change
Fine	150	95%	Hoggs 1 – Buyers' Favour, Hoggs 2 – Sellers' Favour, Ewes 1 – Firm, Ewes 2 – 2% Dearer, Lt. Grey – 2% Dearer.
Medium	213	89%	Hoggs 1 – 1.5% Cheaper, Hoggs 2 – 1.5% Dearer, Ewes 1 – Buyers' Favour, Ewes 2 – Firm, Light Grey – Up to 5% Dearer.
Romney	41	100%	Ewes 1 – 2.5% Dearer.
Mule	260	86%	Hoggs 1 – Sellers' Favour to 2.5% Dearer, Ewes 1 – Firm to Buyers Favour, Ewes 2 – Firm, Cott grades – Firm to Sellers' favour, Lt Grey Up to 5% Dearer.
Lustre	12	75%	Firm to 4% Dearer.
Cheviot	27	52%	Hoggs 1 – Firm, Ewes 1 – Buyers' Favour, Ewes 2 – Sellers' Favour.
Cheviot Cross	41	100%	Buyers' Favour.
Hill	34	100%	Medium – Sellers' Favour.
Blackface	59	100%	Fine 1 – 3% Dearer, No 2 – 2% Dearer, Cotts – Firm.
Welsh Mountain	62	100%	No 1 – Buyers' Favour, No 2 – 2% Dearer, Coloured Kempy – 1% Dearer.
Swaledale	17	100%	No 1 – Fully 10% Dearer.
Lamb	20	100%	N/A
Fault, Oddments, Winter Shorn, Organic	105	87%	Oddments – Firm to Sellers' Favour.

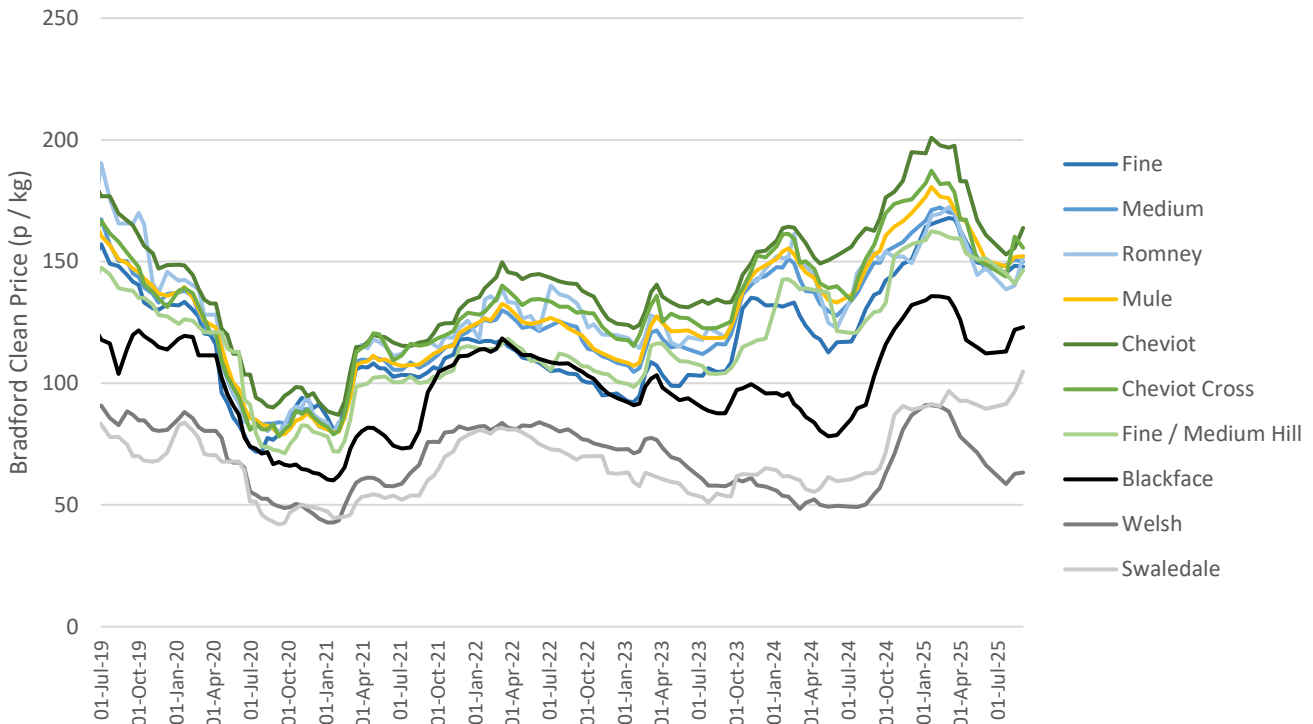


# British Wool – Sale Report

## BW205 – 2<sup>nd</sup> September 2025



### PRICE MOVEMENTS FOR KEY WOOL TYPES: JULY 2019 TO DATE



### PRICE INDEX HISTORY: JULY 2015 TO DATE

