



British Wool – Sale Report

BW206 – 16th September 2025



KEY METRICS

Index:	1.521	Total weight offered:	1,155 tonnes
Average clean price:	£1.515 per kg	Total weight sold:	1,139 tonnes
Average greasy price:	£1.014 per kg	Clearance:	98.6%

SALE REPORT

British Wool saw much stronger demand and a significant price increase in BW206 on 16th September. Bidding was competitive from the outset and strengthened throughout the sale with the full bench of registered buyers participating. All types traded dearer, with core grades of carpet wool trading up to 10% dearer towards the end of the catalogue. The clearance was 99% with all but three speciality lots of Organic certified wool selling. The British Wool index was up 7.9% sale on sale and the average greasy sale price increased to £1.02 per kg, up 5% sale on sale, mirroring the recent rise in New Zealand prices.

The vast majority of the wool in the offer was from the new season. Of the 1,139 tonnes sold, 1,119 tonnes was 2025 season wool and just 20 tonnes was 2024 season wool. The old season wool included a number of speciality lots.

Test results for new season wool continue to be significantly better than last year for colour and British Wool continues to produce a greater proportion of No.1 grades in the core types. British Wool's intake volumes over the summer months were comparable to the 2024 season but have drifted over the last few weeks. Current expectations are for the total supply of wool this season to be slightly lower than last year.

The volumes sold, clearances by wool type, and price changes in BW206 were as below. The next British Wool sale is in three weeks' time on 7th October.

Wool type	Weight sold (Tonnes)	Clearance	Price change
Fine	146	100%	Hoggs 1 – 7.5% Dearer, Hoggs 2 – 3% Dearer, Ewes 1 – 7% Dearer, Ewes 2 – 6% Dearer, Lt. Grey – Fully 10% Dearer.
Medium	229	100%	Hoggs 1 – 6% Dearer, Hoggs 2 – 3% Dearer, Ewes 1 – Fully 5% Dearer, Ewes 2 – 7.5% Dearer, Discoloured – 8% Dearer, Light Grey – 6% Dearer.
Romney	42	100%	Hoggs 1 – 7% Dearer, Ewes 1 – 7.5% Dearer, Ewes 2 – 6.5% Dearer.
Mule	313	100%	Hoggs 1 – 3% Dearer, Ewes 1 – 6% Dearer, Ewes 2 – 7% Dearer, Soft Cotts – 6.5% Dearer, Cotts – 6% Dearer, Lt Grey – 4.5% Dearer.
Lustre	11	100%	1% Dearer.
Cheviot	54	100%	Hoggs 1 – 7% Dearer, Ewes 1 – 8% Dearer, Ewes 2 – 3.5% Dearer.
Cheviot Cross	58	100%	7.5% Dearer.
Hill	32	100%	Medium – 6% Dearer.
Blackface	66	100%	Medium 1 – 8.5% Dearer, Fine 1 – 8% Dearer, No 2 – 8.5% Dearer, Cotts – 9% Dearer.
Welsh Mountain	89	100%	No 1 – 7% Dearer, No 2 – 6% Dearer, Coloured Kempy – 15% Dearer.
Swaledale	17	100%	No 1 – Sellers' Favour.
Lamb	25	100%	N/A
Fault, Oddments, Organic	59	79%	Oddments – Sellers' Favour.

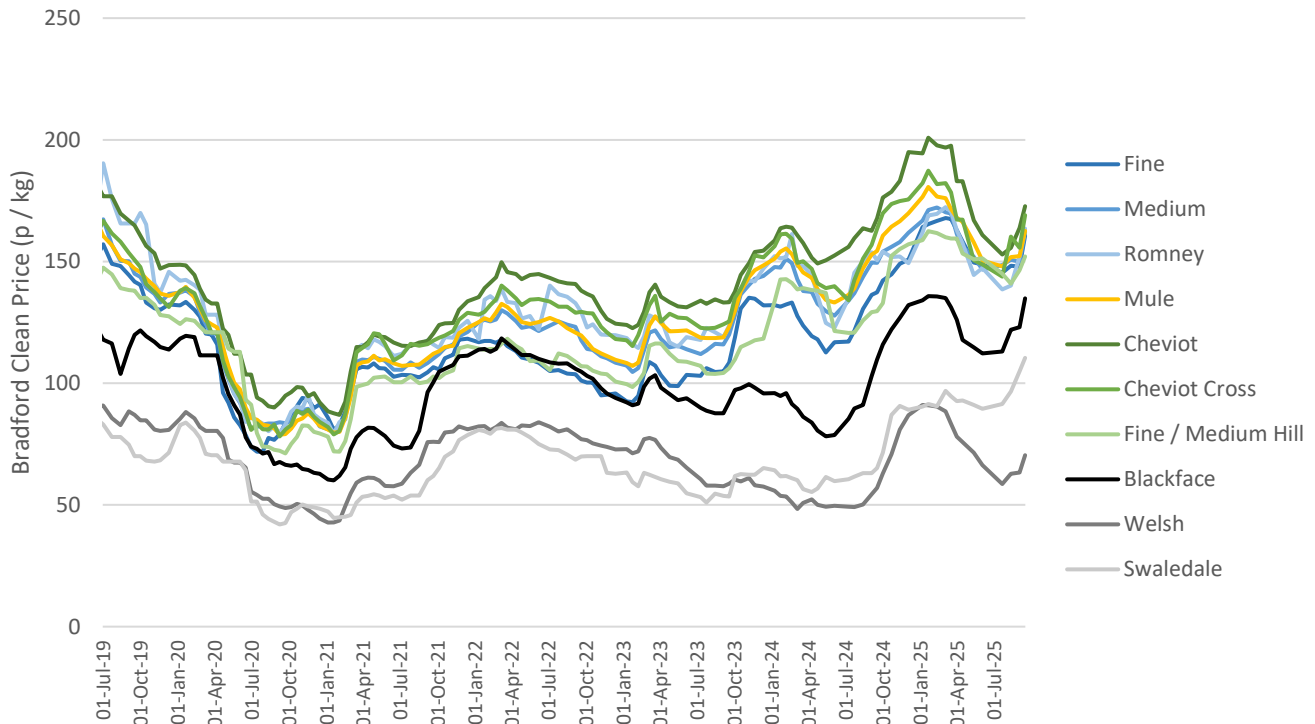


British Wool – Sale Report

BW206 – 16th September 2025



PRICE MOVEMENTS FOR KEY WOOL TYPES: JULY 2019 TO DATE



PRICE INDEX HISTORY: JULY 2015 TO DATE

